

CERTIFICATE OF ANALYSIS

Complement Technology, Inc.
4801 Troup Hwy, Suite 701
Tyler, Texas 75703, USA

Product: **C1r Enzyme**
Catalog # **A102** Lot #
Exp. Date:

Description: Purified Human Complement Protein C1r Enzyme

<u>Specifications</u>	<u>Limits</u>	<u>Results</u>
PROTEIN CONCENTRATION	0.95 – 1.2 mg/mL. C1r has an extinction coefficient of $E^{1\%}_{280nm} = 11.5$	1.05 mg/ml
FILL VOLUME	0.250 - 0.270 mL	0.255mL
BUFFER	10 mM Imidazole 140 mM NaCl 8 mM EDTA, pH 7.4	Conforms
PRESERVATIVE	None, filtered through a 0.22 μ m pore size filter.	None, filtered through a 0.22 μ m pore size filter.
PURITY	$\geq 90\%$	$\geq 93\%$ by SDS-PAGE
	Non-reduced SDS-Page, C1r is a single protein band of 92,000	Conforms
	Reduced SDS-Page, C1r has two protein subunits of 57,000 (heavy chain) and 35,000 (light chain) MW	Conforms
FUNCTIONAL ACTIVITY	$\geq 80\%$ of C1r will bind with excess C1-Inh	$\geq 85\%$
IMMUNOCHEMISTRY (DILUTION OUCHTERLONIES)	\leq trace amounts of IgG, IgA, IgM, albumin, C1s, C4BP, or C1-INH	Conforms
	Strong precipitin line forms with anti-C1r antiserum	Conforms
HUMAN SERUM/PLASMA - STARTING MATERIAL		
HBsAg	Negative	Negative
Anti-HBc	Negative	Negative
Anti-HIV 1 & 2 Plus O	Negative	Negative
Anti-HCV	Negative	Negative
Anti- Syphilis	Negative	Negative
HCV/HIV by NAT	Negative	Negative
HTLV I & 2	Negative	Negative
West Nile Virus (WNV) by NAT	Negative	Negative

STORE AT -70°C or BELOW. Avoid Repeated Freeze/Thaw.
Thaw quickly at 37°C, mix, and put in an ice+water bath to cool.
FOR RESEARCH USE ONLY. NOT FOR HUMAN OR DRUG USE.

Signature of Analyst

Date of Analysis

Phone: 1-903-581-8284 FAX: 1-903-581-0491 Email: contactcti@complementtech.com
Web Site: www.ComplementTech.com

THIS IS A GENERIC REPRESENTATION



CompTech

Complement Technology, Inc.
4801 Troup Hwy, Suite 701
Tyler, Texas 75703

A102 C1r Enzyme, Purified Human Complement Protein

SDS-PAGE Gel Information

NuPAGE 4-12 % Bis-Tris Gel from Invitrogen

1 mm thick gel

MOPS running buffer

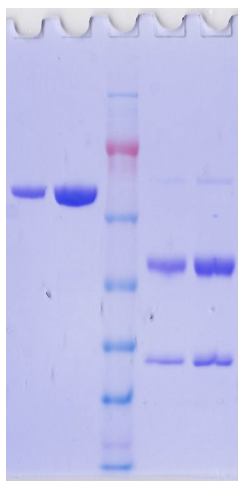
Sample size = 12 ul/lane

MW Std: See Blue Plus 2 Prestained Standard from Invitrogen (10 μ l)

200 Volts constant for 50 min

Stained with Coomassie Brilliant Blue R-250

Run date: 7/18/2023



Lane #: 1 2 3 4 5

Lane #1: 2 ug C1r Enzyme

Lane #2: 4 ug C1r Enzyme

Lane #3: MW Std

Lane #4: 2 ug C1r Enzyme + DTT

Lane #5: 4 ug C1r Enzyme + DTT

Phone: 1-903-581-8284 FAX: 1-903-581-0491

Email: contactCTI@complementtech.com

Web Site: www.ComplementTech.com