

CERTIFICATE OF ANALYSIS

Complement Technology, Inc.
4801 Troup Hwy, Suite 701
Tyler, Texas 75703, USA

Product: C1 Protein
Catalog # **A098** Lot #
Exp. Date:

Description: Purified Human Complement Protein C1

<u>Specifications</u>	<u>Limits</u>	<u>Results</u>
PROTEIN CONCENTRATION	Total Protein: ≥ 0.2 mg/mL using an extinction coefficient of $E^{1\%/280\text{nm}} = 8.9$	0.49 mg/mL
	C1 protein: ≥ 0.20 mg/ml based on functional activity measurements	0.33 mg/ml
FILL VOLUME	1.0 – 1.2 mL	1.05 mL
BUFFER	50 mM NaAcetate, 50 mM EACA, 10 mM Benzamidine 10mM EDTA, 300 mM NaCl, 40% Glycerol, pH 5.5	Conforms
PRESERVATIVE	None, filtered through a 0.22 μm pore size filter.	None, filtered through a 0.22 μm pore size filter.
PURITY	$\geq 70\%$	$\geq 95\%$ by SDS
FUNCTIONAL ACTIVITY*	Titer $>2.5 \times 10^5$ C1H50 Units/mg	474,000 Units/mg
	$\geq 70\%$ of C1 activity in NHS on a mg/mg basis	100%
IMMUNOCHEMISTRY	\leq trace amounts of IgG, IgA, IgM, albumin, C2,C3,C4,and C5.	Conforms
HUMAN SERUM/PLASMA STARTING MATERIAL		
HBsAg	Negative	Negative
ANTI-HIV 1/2	Negative	Negative
ANTI-HCV	Negative	Negative
HCV, HIV, HBV by NAT	Negative	Negative
West Nile Virus (WNV) by NAT	Negative	Negative
ANTI-SYPHILIS	Negative	Negative
ANTI-HBc	Negative	Negative
HTLV I/II	Negative	Negative

*One C1H50 unit is defined as the amount of C1 required to yield 50% lysis of 3×10^7 EA when incubated in the presence of $2 \mu\text{g}$ C4 and $0.25 \mu\text{g}$ C2 at 30°C for 12 minutes in a total volume of $500 \mu\text{l}$ SGVB++. The reaction is developed by the addition of 1 ml of guinea pig serum diluted 1:50 in SGVB, 40 mM EDTA, pH 7.2, for 30 minutes at 30°C .

STORE AT -70°C or BELOW. Avoid Repeated Freeze/Thaw
Thaw quickly at 37°C , mix, and put in an ice+ water bath to cool.
FOR RESEARCH USE ONLY NOT FOR HUMAN OR DRUG USE

Signature of Analyst

Date of Analysis

THIS IS A GENERIC REPRESENTATION



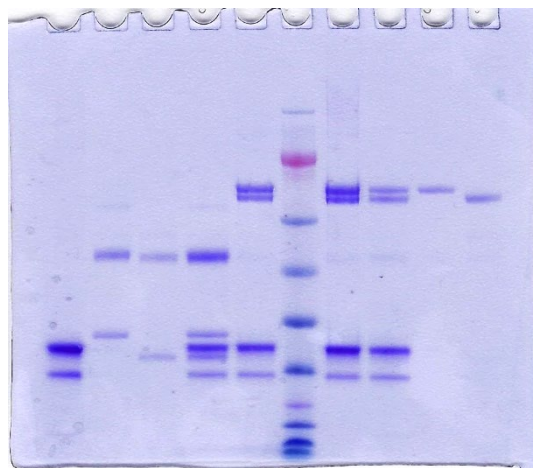
CompTech

Complement Technology, Inc.
4801 Troup Hwy, Suite 701
Tyler, Texas 75703

A098 C1, Purified Human Complement Protein

SDS-PAGE Gel Information

NuPAGE 4-12 % Bis-Tris Gel from Invitrogen
1 mm thick gel
MOPS running buffer
Sample size = 16 ul/lane
MW Std: See Blue Plus 2 Prestained Standard from Invitrogen (10 μ l)
200 Volts constant for 50 min
Stained with Coomassie Brilliant Blue R-250
Run date: 10/31/2022



Lane#: 1 2 3 4 5 6 7 8 9 10

Lane #1: 1 ug C1q DTT
Lane #2: 1 ug C1r Enzyme DTT
Lane #3: 1ug C1s Enzyme + DTT
Lane #4: 1ug C1q + 1ug C1r Enzyme + 1ug C1s Enzyme + DTT
Lane #5: 2 ug C1, + DTT
Lane #6: See Blue Plus 2 prestained standard
Lane #7: 3 ug C1 + DTT
Lane #8: 1ug C1q + 1ug C1r Proenzyme + 1ug C1s Proenzyme + DTT
Lane #9: 1ug C1r Proenzyme + DTT
Lane #10: 1ug C1s Proenzyme + DTT

Phone: 1-903-581-8284 FAX: 1-903-581-0491
Email: contactCTI@ComplementTech.com
Web Site: www.ComplementTech.com