

# CERTIFICATE OF ANALYSIS

**Complement Technology, Inc.**  
4801 Troup Hwy, Suite 701  
Tyler, Texas 75703, USA

Product: **Rabbit C3b**  
Catalog # **Rb114** Lot #  
Exp. Date:

Description: Purified Rabbit Complement Protein C3b

<u>Specifications</u>	<u>Limits</u>	<u>Results</u>
PROTEIN CONCENTRATION	0.49 – 0.53 mg/mL. C3b has an extinction coefficient of $E^{1\%}_{280nm} = 10.0$ *	0.50 mg/ml
FILL VOLUME	0.100 - 0.110 mL	0.105 mL
BUFFER	Phosphate buffered saline	Phosphate buffered saline
PRESERVATIVE	None, filtered through a 0.22 $\mu$ m pore size filter.	None, filtered through a 0.22 $\mu$ m pore size filter.
PURITY	> 85%	$\geq$ 93% by SDS-PAGE
IMMUNOCHEMISTRY	$\leq$ trace amounts of IgG, IgM, albumin, C4 and C5	Conforms
STARTING MATERIAL	Rabbit serum from healthy animals	Conforms

\* Extinction coefficient ( $E^{1\%}_{280nm}$ ) for rabbit C3b was assumed to be 10.0.

**Store at -70°C or BELOW.**  
**Thaw quickly at 37° C, mix, and put in an ice+water bath to cool.**  
**Avoid Repeated Freeze/Thaw.**

FOR RESEARCH USE ONLY  
NOT FOR HUMAN OR DRUG USE

---

Signature of Analyst

---

Date of Analysis



# CompTech

Complement Technology, Inc.  
4801 Troup Hwy, Suite 701  
Tyler, Texas 75703

Cat# Rb114, Purified Rabbit Complement Protein C3b

## SDS-PAGE Gel Information

NuPAGE 4-12 % Bis-Tris Gel from Invitrogen

1 mm thick gel

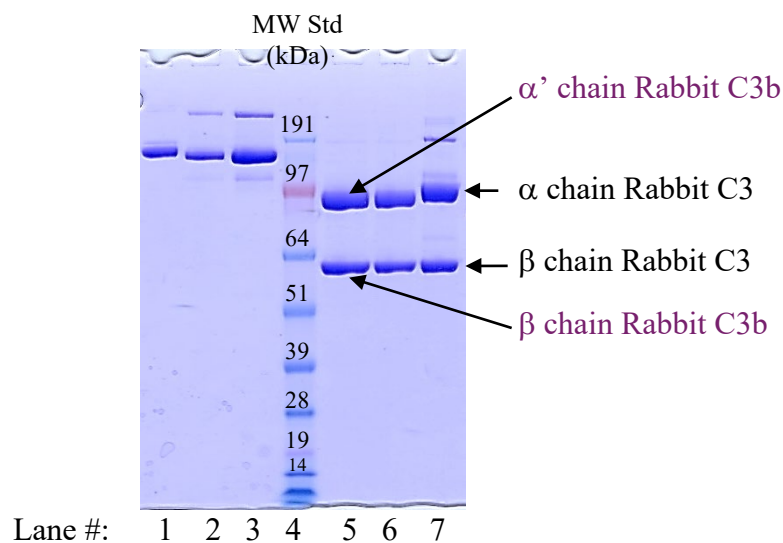
MOPS running buffer

Sample size = 16ul/lane

200 Volts constant for 50 min

Stained with Coomassie Brilliant Blue R-250

Run date: 4/5/2024



Lane #1: 1.0 μg Rabbit C3

Lane #2: 1.0 μg Rabbit C3b

Lane #3: 2.0 μg Rabbit C3b

Lane #4: See Blue Plus 2 prestained standard

Lane #5: 4.0 μg Rabbit C3b + DTT

Lane #6: 2.0 μg Rabbit C3b + DTT

Lane #7: 2.0 μg Rabbit C3 + DTT

Phone: 1-903-581-8284 FAX: 1-903-581-0491

Email: [contactCTI@ComplementTech.com](mailto:contactCTI@ComplementTech.com)

Web Site: [www.ComplementTech.com](http://www.ComplementTech.com)