

CERTIFICATE OF ANALYSIS

Complement Technology, Inc.
4801 Troup Hwy, Suite 701
Tyler, Texas 75703, USA

Product: **Mouse iC3b**
Catalog # **M115** Lot #
Exp. Date:

Description: Purified Mouse Complement Protein iC3b

<u>Specifications</u>	<u>Limits</u>	<u>Results</u>
PROTEIN CONCENTRATION	0.49 – 0.53 mg/mL. C3 has an extinction coefficient of $E^{1\%}_{280nm} = 9.94$ *	0.5 mg/ml
FILL VOLUME	0.100 - 0.110 mL	0.103 mL
BUFFER	Phosphate buffered saline	Phosphate buffered saline
PRESERVATIVE	None, filtered through a 0.22 μ m pore size filter.	None, filtered through a 0.22 μ m pore size filter.
PURITY	> 85%	\geq 95% by SDS-PAGE
IMMUNOCHEMISTRY	\leq trace amounts of IgG, IgM, FB, FH, FI	Conforms
STARTING MATERIAL	Mouse serum/plasma from healthy animals	Conforms
GENDER	Mixed	Conforms

* The concentration of mouse iC3b was determined using the calculated extinction coefficient of mouse C3 based on its amino acid sequence using ProtParam and assumes all pairs of Cys residues form cystines.

Store at -70°C or BELOW.
Thaw quickly at 37° C, mix, and put in an ice+water bath to cool.
Avoid Repeated Freeze/Thaw.

FOR RESEARCH USE ONLY
NOT FOR HUMAN OR DRUG USE

Signature of Analyst

Date of Analysis

THIS IS A GENERIC REPRESENTATION



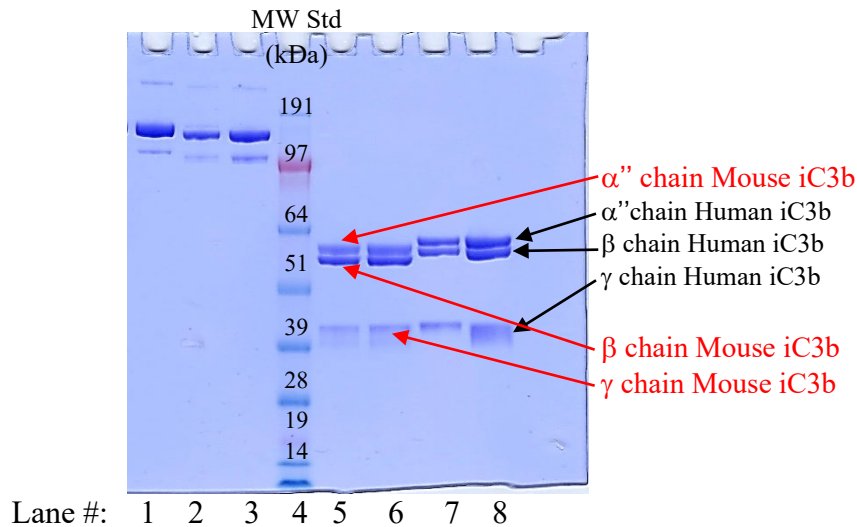
CompTech

Complement Technology, Inc.
4801 Troup Hwy, Suite 701
Tyler, Texas 75703

Cat# M115, Purified **Mouse Complement** Protein iC3b

SDS-PAGE Gel Information

NuPAGE 4-12 % Bis-Tris Gel from Invitrogen
1 mm thick gel
MOPS running buffer
Sample size = 16ul/lane
200 Volts constant for 50 min
Stained with Coomassie Brilliant Blue R-250
Run date: 2/19/24



Lane #1: 3.0 μg Human iC3b
Lane #2: 1.5 μg **Mouse iC3b**
Lane #3: 3.0 μg **Mouse iC3b**
Lane #4: See Blue Plus 2 prestained standard
Lane #5: 3.0 μg **Mouse iC3b** + DTT
Lane #6: 4.0 μg **Mouse iC3b** + DTT
Lane #7: 3.0 μg Human iC3b + DTT
Lane #8: 4.0 μg Human iC3b + DTT

Phone: 1-903-581-8284 FAX: 1-903-581-0491
Email: contactCTI@ComplementTech.com
Web Site: www.ComplementTech.com