

# CERTIFICATE OF ANALYSIS

**Complement Technology, Inc.**  
4801 Troup Hwy, Suite 701  
Tyler, Texas 75703, USA

Product: **Rabbit C1q Protein**  
Catalog # **Rb099** Lot #  
Exp. Date:

**Description:** Purified Rabbit Complement Protein C1q

<u>Specifications</u>	<u>Limits</u>	<u>Results</u>
PROTEIN CONCENTRATION	0.49 – 0.53 mg/mL C1q C1q has an extinction coefficient of $E^{1\%}_{280\text{nm}} = 6.82^*$	0.51 mg/ml
FILL VOLUME	0.100 – 0.110 mL	0.103 mL
BUFFER	10 mM HEPES, 300 mM NaCl, pH 7.2	10 mM HEPES, 300 mM NaCl, pH 7.2
PRESERVATIVE	None, filtered through a 0.22 $\mu\text{m}$ pore size filter.	None, filtered through a 0.22 $\mu\text{m}$ pore size filter.
PURITY	$\geq 85\%$	$\geq 95\%$ by SDS PAGE
IMMUNOCHEMISTRY	$\leq$ trace amounts of IgG, IgM, albumin	Conforms
STARTING MATERIAL	Rabbit serum/plasma from healthy animals	Conforms
GENDER	Mixed	Conforms

\* Reid, K.B.M., et al., Lowe, D.M and Porter, R.R. (1972). Isolation and characterization of C1q, a subcomponent of the first component of complement, from Human and rabbit sera. *Biochem. J.* **130**: 749-763

**STORE AT -70°C or BELOW.**  
**Thaw quickly at 37°C, mix, and put in an ice+water bath to cool.**  
**Avoid Repeated Freeze/Thaw**

FOR RESEARCH USE ONLY  
NOT FOR HUMAN OR DRUG USE

---

Signature of Analyst

Phone: 1-903-581-8284 FAX: 1-903-581-0491 Email: [contactCTI@ComplementTech.com](mailto:contactCTI@ComplementTech.com)  
Web Site: [www.ComplementTech.com](http://www.ComplementTech.com)

---

Date of Analysis

THIS IS A GENERIC REPRESENTATION



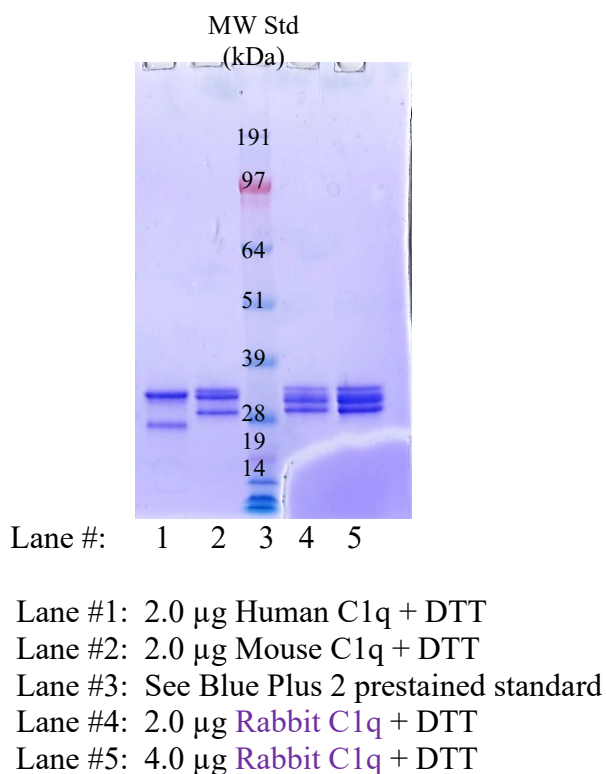
CompTech

Complement Technology, Inc.  
4801 Troup Hwy, Suite 701  
Tyler, Texas 75703

Cat# Rb099, Purified Rabbit Protein C1q

## SDS-PAGE Gel Information

NuPAGE 4-12 % Bis-Tris Gel from Invitrogen  
1 mm thick gel  
MOPS running buffer  
Sample size = 12ul/lane  
200 Volts constant for 50 min  
Stained with Coomassie Brilliant Blue R-250  
Run date: 2/13/24



Phone: 1-903-581-8284 FAX: 1-903-581-0491  
Email: [contactCTI@ComplementTech.com](mailto:contactCTI@ComplementTech.com)  
Web Site: [www.ComplementTech.com](http://www.ComplementTech.com)