

# CERTIFICATE OF ANALYSIS

**Complement Technology, Inc.**  
4801 Troup Hwy, Suite 701  
Tyler, Texas 75703, USA

**Product: Factor C2b Fragment**  
Catalog # **A171** Lot #  
Exp. Date:

Description: Factor C2b Fragment Purified Human Complement Protein (smaller fragment, 34KDa) \*

<u>Specifications</u>	<u>Limits</u>	<u>Results</u>
PROTEIN CONCENTRATION	1.0 – 1.1 mg/mL. Factor C2b has an extinction coefficient ** of $E^{1\%}_{280nm} = 14.01$	1.03 mg/ml
FILL VOLUME	0.030 – 0.040 mL	0.035 mL
BUFFER	Phosphate, buffered Saline, pH 7.2	Phosphate, buffered saline, pH 7.2
PRESERVATIVE	None, filtered through a 0.22 $\mu$ m pore size filter.	None, filtered through a 0.22 $\mu$ m pore size filter.
PURITY	> 90%	$\geq$ 95% by SDS-PAGE
IMMUNOCHEMISTRY	$\leq$ trace amounts of IgG, IgA, IgM, albumin & C1s	Conforms
HUMAN SERUM/PLASMA STARTING MATERIAL		
HBsAg	Negative	Negative
Anti-HIV 1 and 2 Plus O	Negative	Negative
Anti-HCV	Negative	Negative
HIV-1/HCV/HBV by NAT	Negative	Negative
West Nile Virus (WNV) by NAT	Negative	Negative
Anti-Syphilis	Negative	Negative
Anti-HTLV I/II	Negative	Negative
Anti-HBc	Negative	Negative

\* Nagasawa S. & Stroud, R. M. (1977) Cleavage of C2 by C1s into the antigenically distinct fragments C2a and C2b. PNAS **74**, 2998-3001.

Complement scientists have decided to designate the smaller of all C fragments with an 'a', and the larger with a 'b'. Thus more recent literature may refer the smaller C2 fragment as C2a. Complement Technology, Inc. uses the current Uniport names which follow the original naming practice.

\*\* Extinction coefficient is calculated from the amino acid sequence of human C2b using ProtParam and assumes all pairs of Cys residues form cystines.

**STORE AT -70°C or BELOW.      Avoid Repeated Freeze/Thaw**  
**Thaw quickly at 37°C, mix, and put in an ice+water bath to cool.**  
**FOR RESEARCH USE ONLY      NOT FOR HUMAN OR DRUG USE**

\_\_\_\_\_  
Signature of Analyst

\_\_\_\_\_  
Date of Analysis



# CompTech

Complement Technology, Inc.  
4801 Troup Hwy, Suite 701  
Tyler, Texas 75703

## Cat# 171, Purified Human Complement Protein C2b (smaller fragment, 34kDa)

### SDS-PAGE Gel Information

NuPAGE 4-12 % Bis-Tris Gel from Invitrogen

1 mm thick gel

MOPS running buffer

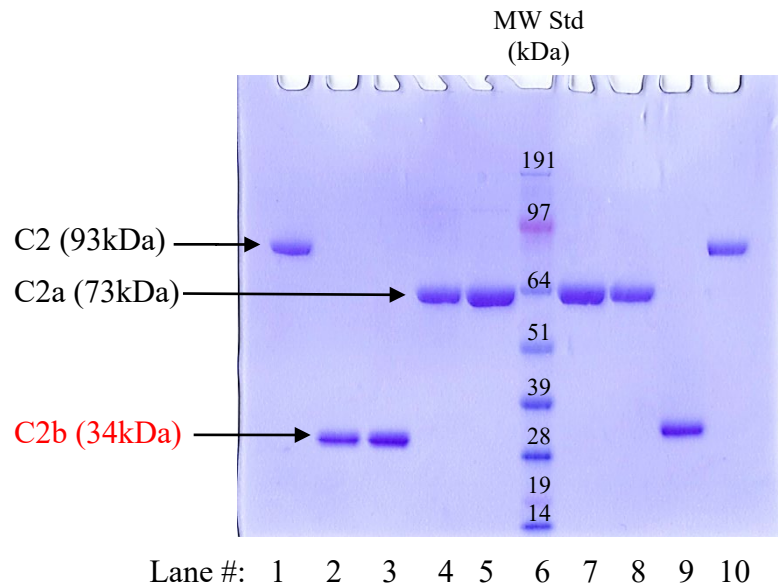
Sample size = 12 ul/lane

MW Std: See Blue Plus 2 Prestained Standard from Invitrogen (10µl)

200 Volts constant for 50 min

Stained with Coomassie Brilliant Blue R-250

Run date: 4/18/23



Lane #1: 2 ug C2 (93kDa)

Lane #2: 2 ug C2b (34kDa)

Lane #3: 3 ug C2b (34kDa)

Lane #4: 2 ug C2a (73kDa)

Lane #5: 3 ug C2a (73kDa)

Lane #6: See Blue Plus 2 Prestained Standards

Lane #7: 3 ug C2a + DTT

Lane #8: 2 ug C2a + DTT

Lane #9: 2 ug C2b + DTT

Lane #10: 2 ug C2 + DTT

Phone: 1-903-581-8284 FAX: 1-903-581-0491

Email: [contactCTI@complementtech.com](mailto:contactCTI@complementtech.com)

Web Site: [www.ComplementTech.com](http://www.ComplementTech.com)