

CERTIFICATE OF ANALYSIS

Complement Technology, Inc.
4801 Troup Hwy, Suite 701
Tyler, Texas 75703, USA

Product: Factor C2a Fragment
Catalog # **A172** Lot #
Exp. Date:

Description: Factor C2a Fragment Purified Human Complement Protein (larger fragment, 73kDa) *

<u>Specifications</u>	<u>Limits</u>	<u>Results</u>
PROTEIN CONCENTRATION	1.0 – 1.1 mg/mL. Factor C2a has an extinction coefficient ** of $E^{1\%/280nm} = 10.81$	1.03 mg/ml
FILL VOLUME	0.030 – 0.040 mL	0.033 mL
BUFFER	Phosphate, buffered Saline, pH 7.2	Phosphate, buffered saline, pH 7.2
PRESERVATIVE	None, filtered through a 0.22 μ m pore size filter.	None, filtered through a 0.22 μ m pore size filter.
PURITY	> 90%	\geq 95% by SDS-PAGE
IMMUNOCHEMISTRY	\leq trace amounts of IgG, IgA, IgM, albumin & C1s	Conforms
HUMAN SERUM/PLASMA STARTING MATERIAL		
HBsAg	Negative	Negative
Anti-HIV 1 & 2	Negative	Negative
Anti-HCV	Negative	Negative
HCV/HIV/HBV by NAT	Negative	Negative
WNV RNA by NAT	Negative	Negative
Anti-Syphilis	Negative	Negative
Anti-HTLV I & II	Negative	Negative
Anti-HBc	Negative	Negative
Chagas	Negative	Negative

* Nagasawa S. & Stroud, R. M. (1977) Cleavage of C2 by C1s into the antigenically distinct fragments C2a and C2b. PNAS **74**, 2998-3001.

Complement scientists have decided to designate the smaller of all C fragments with an 'a', and the larger with a 'b'. Thus more recent literature may refer the larger C2 fragment as C2b. Complement Technology, Inc. uses the current Uniport names which follow the original naming practice.

** Extinction coefficient is calculated from the amino acid sequence of human C2a using ProtParam and assumes all pairs of Cys residues form cystines.

STORE AT -70°C or BELOW. Avoid Repeated Freeze/Thaw
Thaw quickly at 37°C, mix, and put in an ice+water bath to cool.
FOR RESEARCH USE ONLY NOT FOR HUMAN OR DRUG USE

Signature of Analyst

Date of Analysis

Phone: 1-903-581-8284 FAX: 1-903-581-0491 Email: contactCTI@complementtech.com
Web Site: www.ComplementTech.com



CompTech

Complement Technology, Inc.
4801 Troup Hwy, Suite 701
Tyler, Texas 75703

Cat# 172, Purified Human Complement Protein C2a (larger fragment, 73kDa)

SDS-PAGE Gel Information

NuPAGE 4-12 % Bis-Tris Gel from Invitrogen

1 mm thick gel

MOPS running buffer

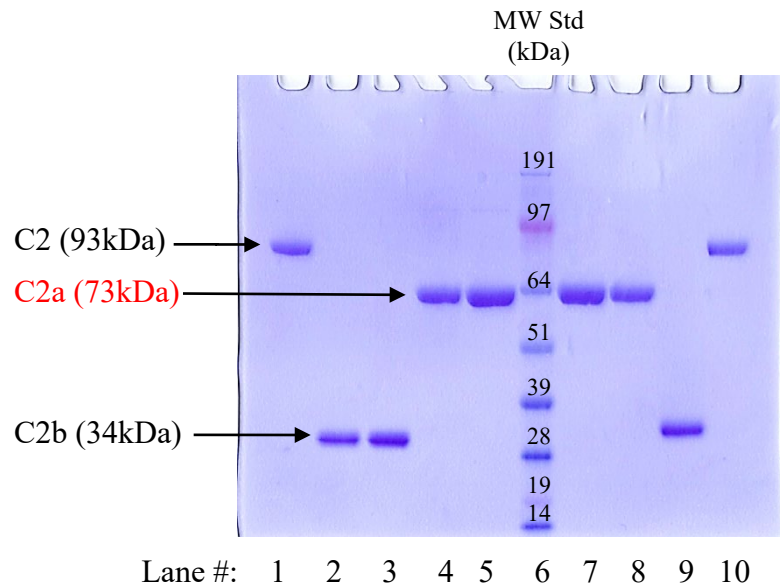
Sample size = 12 ul/lane

MW Std: See Blue Plus 2 Prestained Standard from Invitrogen (10µl)

200 Volts constant for 50 min

Stained with Coomassie Brilliant Blue R-250

Run date: 4/18/23



- Lane #1: 2 ug C2 (93kDa)
- Lane #2: 2 ug C2b (34kDa)
- Lane #3: 3 ug C2b (34kDa)
- Lane #4: 2 ug C2a (73kDa)
- Lane #5: 3 ug C2a (73kDa)
- Lane #6: See Blue Plus 2 Prestained Standards
- Lane #7: 3 ug C2a + DTT
- Lane #8: 2 ug C2a + DTT
- Lane #9: 2 ug C2b + DTT
- Lane #10: 2 ug C2 + DTT

Phone: 1-903-581-8284 FAX: 1-903-581-0491

Email: contactCTI@complementtech.com

Web Site: www.ComplementTech.com