

CERTIFICATE OF ANALYSIS

Complement Technology, Inc.
4801 Troup Hwy, Suite 701
Tyler, Texas 75703, USA

Product: **Rat C3b**
Catalog # **R114** Lot #
Exp. Date:

Description: C3b Purified Rat Complement Protein

| <u>Specifications</u> | <u>Limits</u> | <u>Results</u> |
|-----------------------|---|---|
| PROTEIN CONCENTRATION | 0.95 – 1.2 mg/mL. C3b has an extinction coefficient of $E^{1\%}_{280\text{nm}} = 10.16^*$ | 1.02 mg/ml |
| FILL VOLUME | 0.100 – 0.110 mL | 0.110 mL |
| BUFFER | Phosphate, buffered Saline, pH 7.2 | Phosphate, buffered saline, pH 7.2 |
| PRESERVATIVE | None, filtered through a 0.22 μm pore size filter. | None, filtered through a 0.22 μm pore size filter. |
| PURITY | > 90% | \geq 95% by SDS-PAGE |
| IMMUNOCHEMISTRY | \leq trace amounts of IgG, IgM, albumin | Conforms |
| STARTING MATERIAL | Rat serum from healthy animals | Conforms |
| GENDER | Mixed | Conforms |

* Extinction coefficient is calculated from the amino acid sequence of rat C3 using ProtParam and assumes all pairs of Cys residues form cystines.

Store at -70°C or below.
Thaw quickly at 37° C, mix, and put in an ice+water bath to cool.
Avoid Repeated Freeze/Thaw

FOR RESEARCH USE ONLY
NOT FOR HUMAN OR DRUG USE

Signature of Analyst

Date of Analysis

THIS IS A GENERIC REPRESENTATION



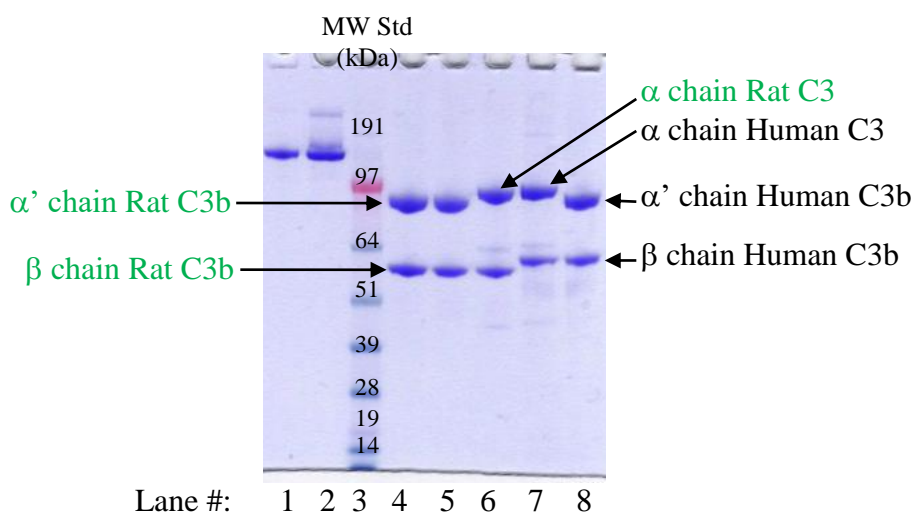
CompTech

Complement Technology, Inc.
4801 Troup Hwy, Suite 701
Tyler, Texas 75703

Cat# R114, Purified **Rat Complement** Protein C3b

SDS-PAGE Gel Information

NuPAGE 4-12 % Bis-Tris Gel from Invitrogen
1 mm thick gel
MOPS running buffer
Sample size = 12ul/lane
200 Volts constant for 50 min
Stained with Coomassie Brilliant Blue R-250
Run date: 12/29/2020



Lane #1: 1.5 μ g **Rat C3b**
Lane #2: 3.0 μ g **Rat C3b**
Lane #3: See Blue Plus 2 prestained standard
Lane #4: 4.0 μ g **Rat C3b** + DTT
Lane #5: 3.0 μ g **Rat C3b** + DTT
Lane #6: 3.0 μ g **Rat C3** + DTT
Lane #7: 3.0 μ g Human C3 + DTT
Lane #8: 3.0 μ g Human C3b + DTT