

# CERTIFICATE OF ANALYSIS

**Complement Technology, Inc.**

4801 Troup Hwy, Suite 701

Tyler, Texas 75703, USA

Product: **Rat C3**Catalog # **R113** Lot #

Exp. Date:

Description: Purified Rat Complement Protein C3

<u>Specifications</u>	<u>Limits</u>	<u>Results</u>
PROTEIN CONCENTRATION	0.90 – 1.2 mg/mL. C3 has an extinction coefficient of $E^{1\%}_{280\text{nm}} = 10.16$	1.12 mg/ml
FILL VOLUME	0.100 - 0.120 mL	0.110 mL
BUFFER	Phosphate buffered saline	Phosphate buffered saline
PRESERVATIVE	None, filtered through a 0.22 $\mu\text{m}$ pore size filter.	None, filtered through a 0.22 $\mu\text{m}$ pore size filter.
PURITY	> 85%	$\geq 95\%$ by SDS-PAGE
IMMUNOCHEMISTRY	$\leq$ trace amounts of IgG, IgM, albumin	Conforms
STARTING MATERIAL	Rat serum from healthy animals	Conforms
GENDER	Mixed	Conforms

\* Extinction coefficient is calculated from the amino acid sequence of rat C3 using ProtParam and assumes all pairs of Cys residues form cystines.

**Store at -70°C or BELOW.****Thaw quickly at 37° C, mix, and put in an ice+water bath to cool.****Avoid Repeated Freeze/Thaw.****FOR RESEARCH USE ONLY  
NOT FOR HUMAN OR DRUG USE**

---

Signature of Analyst

---

Date of Analysis

THIS IS A GENERIC REPRESENTATION



CompTech

Complement Technology, Inc.  
4801 Troup Hwy, Suite 701  
Tyler, Texas 75703

Cat# R113, Purified **Rat Complement** Protein C3

## SDS-PAGE Gel Information

NuPAGE 4-12 % Bis-Tris Gel from Invitrogen

1 mm thick gel

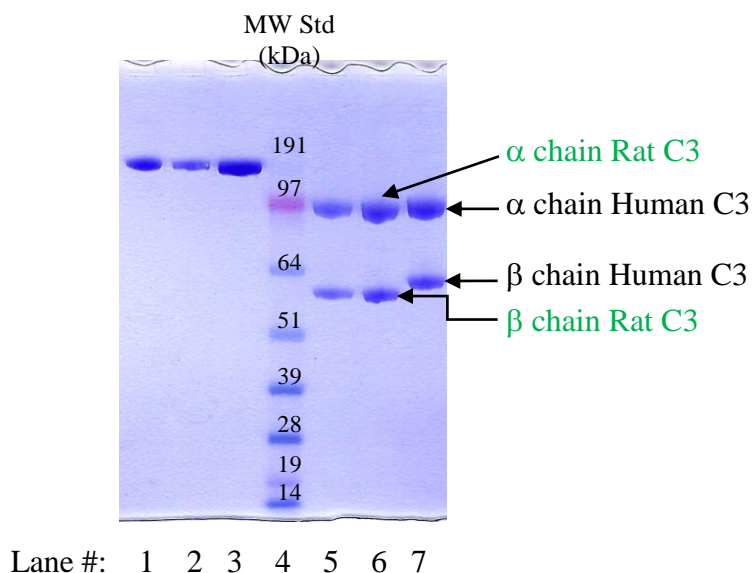
MOPS running buffer

Sample size = 12ul/lane

200 Volts constant for 50 min

Stained with Coomassie Brilliant Blue R-250

Run date: 12/21/2020



Lane #1: 1.5  $\mu$ g Human C3

Lane #2: 1.5  $\mu$ g **Rat C3**

Lane #3: 3.0  $\mu$ g **Rat C3**

Lane #4: See Blue Plus 2 prestained standard

Lane #5: 2.0  $\mu$ g **Rat C3** + DTT

Lane #6: 4.0  $\mu$ g **Rat C3** + DTT

Lane #7: 4.0  $\mu$ g Human C3 + DTT

Phone: 1-903-581-8284 FAX: 1-903-581-0491

Email: [contactCTI@ComplementTech.com](mailto:contactCTI@ComplementTech.com)

Web Site: [www.ComplementTech.com](http://www.ComplementTech.com)