

CERTIFICATE OF ANALYSIS

Complement Technology, Inc.
4801 Troup Hwy, Suite 701
Tyler, Texas 75703, USA

Product: Cyno Monkey C3
Catalog # CY113 Lot #
Exp. Date:

Description: Purified Cynomolgus Monkey Complement Protein C3

<u>Specifications</u>	<u>Limits</u>	<u>Results</u>
PROTEIN CONCENTRATION	0.95 – 1.2 mg/mL. C3 has an extinction coefficient of $E^{1\%/280nm} = 9.74^*$	1.07 mg/ml
FILL VOLUME	0.100 - 0.120 mL	0.110 mL
BUFFER	Phosphate buffered saline	Phosphate buffered saline
PRESERVATIVE	None, filtered through a 0.22 μ m pore size filter	None, filtered through a 0.22 μ m pore size filter.
PURITY	> 85%	\geq 95% by SDS-PAGE
IMMUNOCHEMISTRY (DILUTION OUCHTERLONIES)	\leq trace amounts of IgG, IgA, IgM, albumin, C4, C5, Factor B, Factor H, Factor I or Ceruloplasmin	Conforms
STARTING MATERIAL	Cynomolgus monkey serum from healthy animals of mixed sex	Conforms

* Extinction coefficient is calculated from the amino acid sequence of cynomolgus monkey C3 using ProtParam and assumes all pairs of Cys residues form cystines.

Store at -70°C or BELOW.
Thaw quickly at 37° C, mix, and put in an ice+water bath to cool.
Avoid Repeated Freeze/Thaw.

FOR RESEARCH USE ONLY
NOT FOR HUMAN OR DRUG USE

Signature of Analyst

Date of Analysis

THIS IS A GENERIC REPRESENTATION



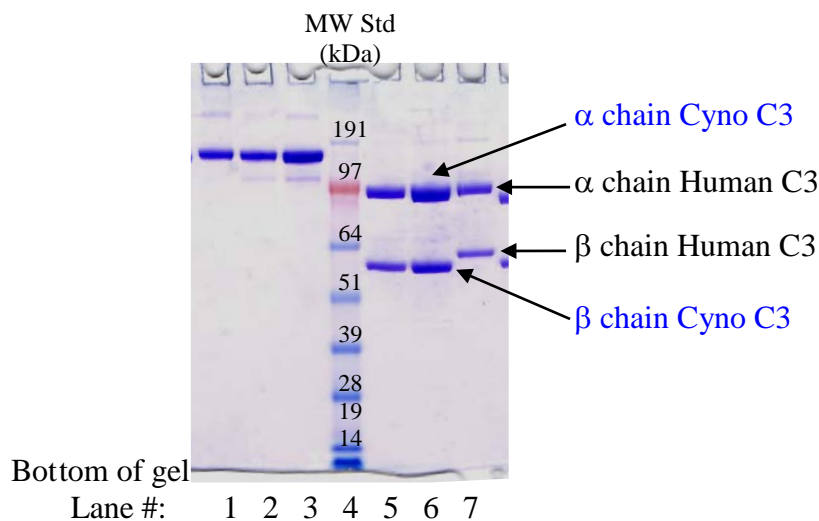
CompTech

Complement Technology, Inc.
4801 Troup Hwy, Suite 701
Tyler, Texas 75703

Cat# CY113, Purified **Cynomolgus monkey Complement Protein C3**

SDS-PAGE Gel Information

NuPAGE 4-12 % Bis-Tris Gel from Invitrogen
1 mm thick gel
MOPS running buffer
Sample size = 12ul/lane
200 Volts constant for 50 min
Stained with Coomassie Brilliant Blue R-250
Run date: 4/17/19



Lane #1: 1.5 μg Human C3
Lane #2: 1.5 μg **Cyno C3**
Lane #3: 3.0 μg **Cyno C3**
Lane #4: See Blue Plus 2 prestained standard
Lane #5: 2.0 μg **Cyno C3** + DTT
Lane #6: 4.0 μg **Cyno C3** + DTT
Lane #7: 2.0 μg Human C3 + DTT

Phone: 1-903-581-8284 FAX: 1-903-581-0491
Email: contactCTI@ComplementTech.com
Web Site: www.ComplementTech.com