

CERTIFICATE OF ANALYSIS

Complement Technology, Inc.

4801 Troup Hwy, Suite 701
Tyler, Texas 75703, USA

Product: **Mouse C3**

Catalog #: **M113** Lot #

Exp. Date:

Description: Purified Mouse Complement Protein C3

<u>Specifications</u>	<u>Limits</u>	<u>Results</u>
PROTEIN CONCENTRATION	0.90 – 1.2 mg/mL. C3 has an extinction coefficient of $E^{1\%/280nm} = 9.94$	1.0 mg/ml
FILL VOLUME	0.100 - 0.120 mL	0.110 mL
BUFFER	Phosphate buffered saline	Phosphate buffered saline
PRESERVATIVE	None, filtered through a 0.22 μ m pore size filter.	None, filtered through a 0.22 μ m pore size filter.
PURITY	> 85%	\geq 93% by SDS-PAGE
IMMUNOCHEMISTRY	\leq trace amounts of IgG, IgM, albumin	Conforms
STARTING MATERIAL	Mouse serum/plasma from healthy animals	Conforms
GENDER	Mixed	Conforms

Store at -70°C or BELOW.

Thaw quickly at 37° C, mix, and put in an ice+water bath to cool.

Avoid Repeated Freeze/Thaw.

FOR RESEARCH USE ONLY NOT FOR HUMAN OR DRUG USE

Signature of Analyst

Date of Analysis

THIS IS A GENERIC REPRESENTATION



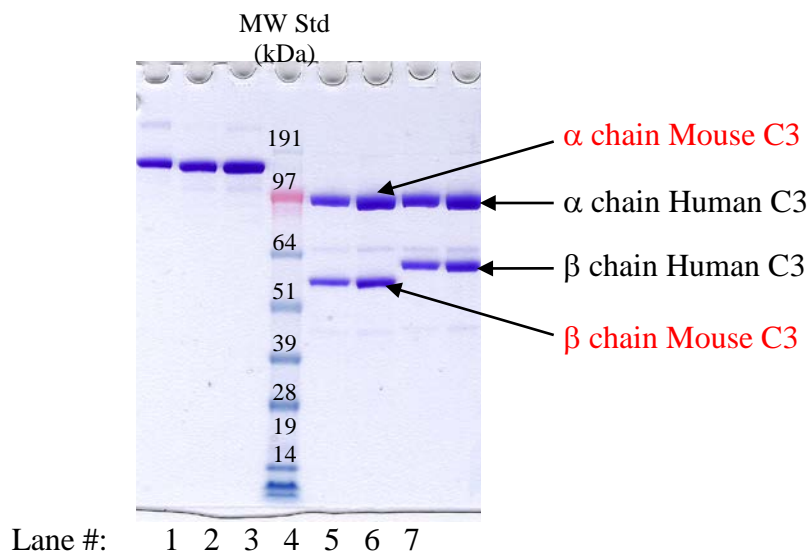
CompTech

Complement Technology, Inc.
4801 Troup Hwy, Suite 701
Tyler, Texas 75703

Cat# M113, Purified **Mouse Complement** Protein C3

SDS-PAGE Gel Information

NuPAGE 4-12 % Bis-Tris Gel from Invitrogen
1 mm thick gel
MOPS running buffer
Sample size = 12ul/lane
200 Volts constant for 50 min
Stained with Coomassie Brilliant Blue R-250
Run date: 6/9/2020



Lane #1: 1.5 µg Human C3, Lot#21
Lane #2: 1.5 µg **Mouse C3**, Lot#2a
Lane #3: 3.0 µg **Mouse C3**, Lot#2a
Lane #4: See Blue Plus 2 prestained standard
Lane #5: 2.0 µg **Mouse C3**, Lot#2a + DTT
Lane #6: 4.0 µg **Mouse C3**, Lot#2a + DTT
Lane #7: 2.0 µg Human C3, Lot#21 + DTT
Lane #8: 4.0 µg Human C3, Lot#21 + DTT

Phone: 1-903-581-8284 FAX: 1-903-581-0491
Email: contactCTI@ComplementTech.com
Web Site: www.ComplementTech.com