

# CERTIFICATE OF ANALYSIS

**Complement Technology, Inc.**  
4801 Troup Hwy, Suite 701  
Tyler, Texas 75703, USA

Product: **Mouse C3b**  
Catalog # **M114** Lot #  
Exp. Date:

Description: C3b Purified Mouse Complement Protein

<b><u>Specifications</u></b>	<b><u>Limits</u></b>	<b><u>Results</u></b>
PROTEIN CONCENTRATION	0.95 – 1.2 mg/mL. C3b has an extinction coefficient of $E^{1\%}_{280\text{nm}} = 9.94^*$	1.03 mg/ml
FILL VOLUME	0.100 – 0.110 mL	0.110 mL
BUFFER	Phosphate, buffered Saline, pH 7.2	Phosphate, buffered saline, pH 7.2
PRESERVATIVE	None, filtered through a 0.22 $\mu\text{m}$ pore size filter.	None, filtered through a 0.22 $\mu\text{m}$ pore size filter.
PURITY	> 90%	$\geq$ 93% by SDS-PAGE
IMMUNOCHEMISTRY	$\leq$ trace amounts of IgG, IgM, albumin	Conforms
STARTING MATERIAL	Mouse serum from healthy animals	Conforms
GENDER	Mixed	Conforms

\* Extinction coefficient is calculated from the amino acid sequence of mouse C3 using ProtParam and assumes all pairs of Cys residues form cystines.

**Store at -70°C or below.**  
**Thaw quickly at 37° C, mix, and put in an ice+water bath to cool.**  
**Avoid Repeated Freeze/Thaw**

**FOR RESEARCH USE ONLY**  
**NOT FOR HUMAN OR DRUG USE**

---

Signature of Analyst

---

Date of Analysis

THIS IS A GENERIC REPRESENTATION



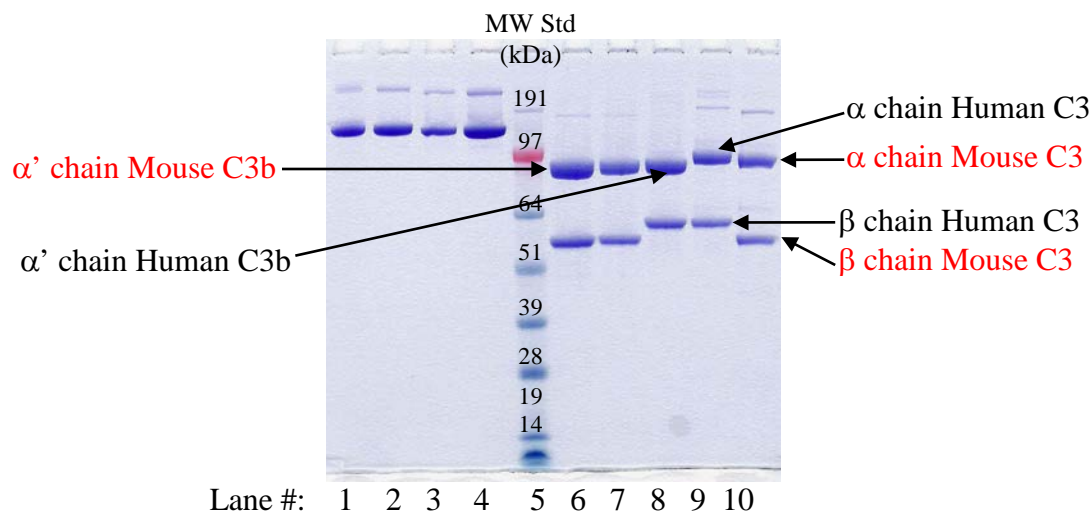
CompTech

Complement Technology, Inc.  
4801 Troup Hwy, Suite 701  
Tyler, Texas 75703

Cat# M114, Purified **Mouse Complement** Protein C3b

### SDS-PAGE Gel Information

NuPAGE 4-12 % Bis-Tris Gel from Invitrogen  
1 mm thick gel  
MOPS running buffer  
Sample size = 12ul/lane  
200 Volts constant for 50 min  
Stained with Coomassie Brilliant Blue R-250  
Run date: 8/13/19



Lane #1: 2.0 μg **Mouse C3**  
Lane #2: 2.0 μg Human C3b  
Lane #3: 2.0 μg **Mouse C3b**  
Lane #4: 4.0 μg **Mouse C3b**  
Lane #5: See Blue Plus 2 prestained standard  
Lane #6: 4.0 μg **Mouse C3b** + DTT  
Lane #7: 2.0 μg **Mouse C3b** + DTT  
Lane #8: 2.0 μg Human C3b + DTT  
Lane #9: 2.0 μg Human C3 + DTT  
Lane #10: 2.0 μg **Mouse C3** + DTT

Phone: 1-903-581-8284 FAX: 1-903-581-0491  
Email: [contactCTI@ComplementTech.com](mailto:contactCTI@ComplementTech.com)  
Web Site: [www.ComplementTech.com](http://www.ComplementTech.com)