

# CERTIFICATE OF ANALYSIS

**Complement Technology, Inc.**  
4801 Troup Hwy, Suite 701  
Tyler, Texas 75703, USA

**Product: C1s-C1INH complex**  
**Catalog # C1040 Lot #**  
**Exp. Date:**

**Description:** Purified Human Complement C1s-C1INH complex

<u>Specifications</u>	<u>Limits</u>	<u>Results</u>
PROTEIN CONCENTRATION	0.95 – 1.2 mg/mL. C1s-C1INH complex using an extinction coefficient of $E^{1\%}_{280nm} = 7.25$	0.51 mg/ml
FILL VOLUME	0.100 - 0.110 mL	0.110 mL
BUFFER	Phosphate Buffered saline with 5mM EDTA, pH =7.3	Conforms
PRESERVATIVE	None, filtered through a 0.22 $\mu$ m pore size filter.	None, filtered through a 0.22 $\mu$ m pore size filter.
PURITY	$\geq 90\%$	$\geq 95\%$ by SDS-PAGE
	Non-reduced SDS-PAGE: C1s-C1INH complex is a single 161,000 MW protein band.	Conforms
	Reduced SDS-PAGE: C1s-C1INH complex exhibits two bands. A 103,000 MW band of C1INH (75,000 MW) covalently linked to the B chain (28,000 MW) of C1s enzyme. The second band is the A chain (58,000 MW) of C1s enzyme.	Conforms
PRESENCE OF C1s enzyme	$\leq 10\%$	$\leq 2\%$ by SDS-PAGE
IMMUNOCHEMISTRY (DILUTION OUCHTERLONIES)	$\leq$ trace amounts of IgG, IgA, IgM, albumin, C1r, C3, C4, or ceruloplasmin	Conforms
HUMAN SERUM/PLASMA STARTING MATERIAL		
HBsAg	Negative	Negative
Anti-HIV-I	Negative	Negative
Anti-HIV II	Negative	Negative
Anti-HCV	Negative	Negative

**STORE AT -70°C or BELOW.**  
**Thaw quickly at 37°C, mix, and put in an ice+water bath to cool.**  
**Avoid Repeated Freeze/Thaw**

FOR RESEARCH USE ONLY  
NOT FOR HUMAN OR DRUG USE

---

Signature of Analyst

---

Date of Analysis



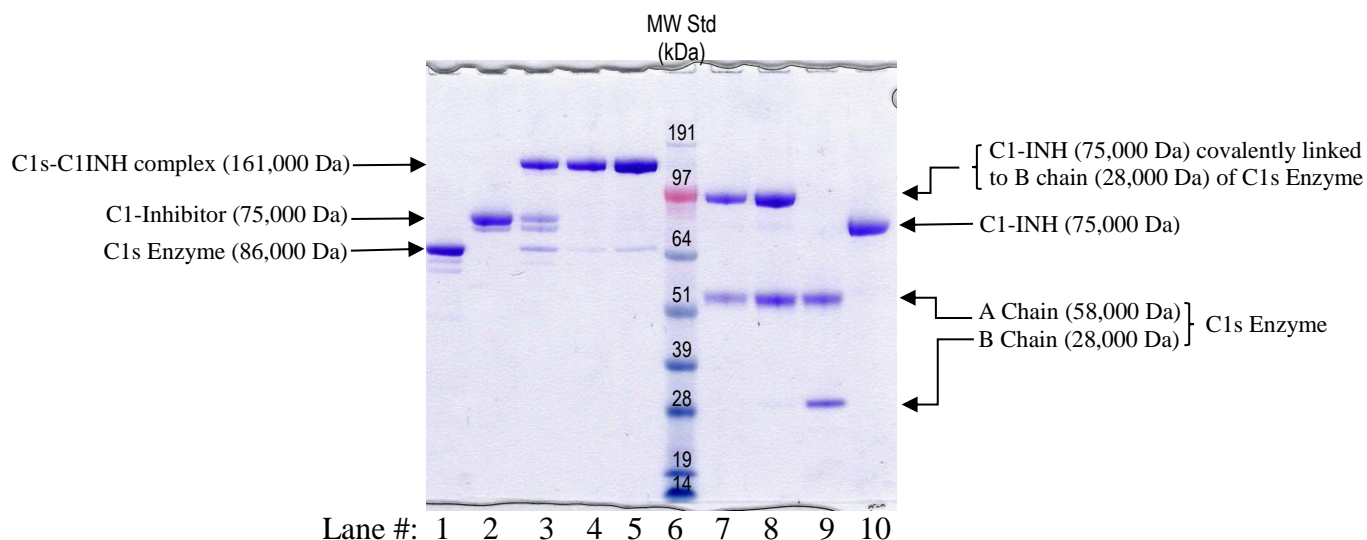
CompTech

Complement Technology, Inc.  
4801 Troup Hwy, Suite 701  
Tyler, Texas 75703

Cat# C1040, Purified C1s Enzyme-C1INH complex

SDS-PAGE Gel Information

NuPAGE 4-12 % Bis-Tris Gel from Invitrogen  
1 mm thick gel  
MOPS running buffer  
Sample size = 16 ul/lane  
MW Std: See Blue Plus 2 Prestained Standard from Invitrogen (10µl)  
200 Volts constant for 50 min  
Stained with Coomassie Brilliant Blue R-250  
Run date:



- Lane #1: 2 ug C1s Enzyme
- Lane #2: 2 ug C1-Inhibitor
- Lane #3: 4 ug Pre-purification C1s-C1-Inhibitor Complex
- Lane #4: 2 ug Purified C1s-C1-Inhibitor Complex
- Lane #5: 4 ug Purified C1s-C1-Inhibitor Complex
- Lane #6: See Blue MW Std
- Lane #7: 2 ug Purified C1s-C1-Inhibitor Complex + DTT
- Lane #8: 4 ug Purified C1s-C1-Inhibitor Complex + DTT
- Lane #9: 4 ug C1s Enzyme + DTT
- Lane #10: 2 ug C1-Inhibitor + DTT